

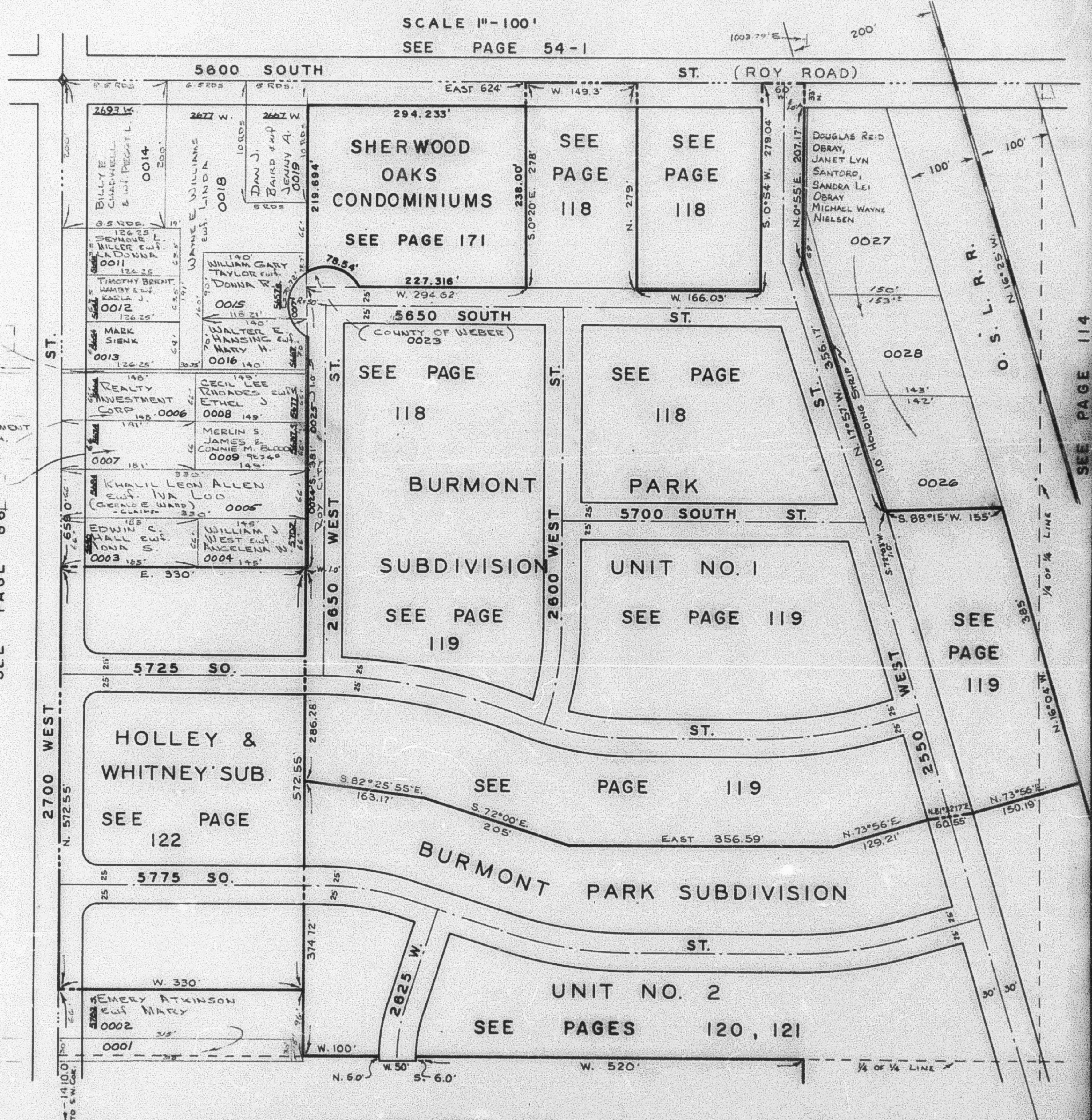
N.W. 1/4 OF N.W. 1/4
SECTION 23, T.5N.,R.2W., S.L.B.&M.
IN ROY CITY

117

TAXING UNIT : 41

PREFIX : 09-117

SCALE 1"=100'
SEE PAGE 54-1



COUNTY OF WEBER
0010

MORTGAGE INVESTMENT
TRUST OF UTAH
CLAIMS. 0006

WILLIAM SCRIVANI
0007

SEE PAGE 86

SEE PAGE 114

SEE PAGE 123

R.G.S. 2-62